



sicetelecom.it

CPE AC ATRH0595

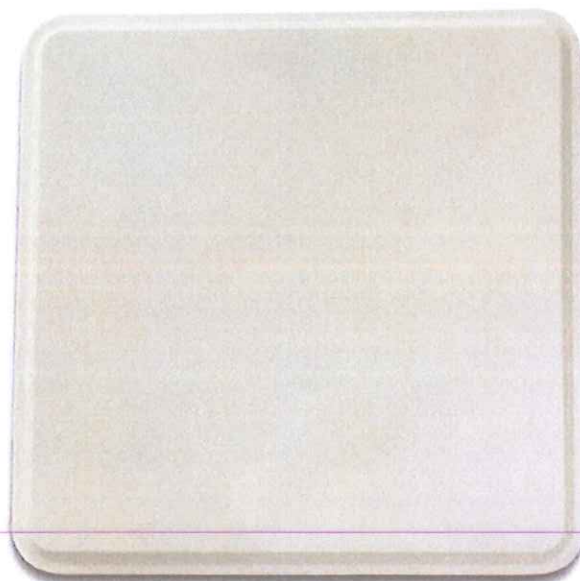
Dual Polarization 5 GHz TDMA AC CPE with ESD Protection

COMMUNICATION MAKERS



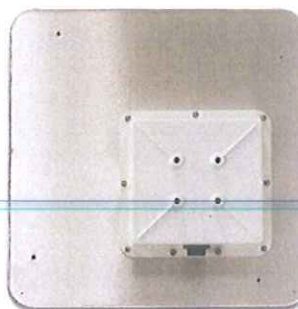
Caratteristiche Principali

- » CPE Dual Polarization 5 GHz HIPERLAN 802.11a/n/ac - TDMA
- » Protocollo AC con 256qam (max PHY rate 867Mbps@80MHz - 2 stream)
- » Scaricatore integrato lato ethernet
- » Compatibile con base station sia AC, sia 802.11a/n
- » Antenna integrata alto guadagno 23 dBi
- » Tecnologia Fixed: connessione diretta RF (+3dB Extra RX Signal)
- » Minore Interferenza Intersimbolica e Intermodulazione
- » Engineering made in Italy by SICE
- » Protocollo AC con 256qam (max PHY rate 867Mbps@80MHz - 2 stream)
- » Interfacce Ethernet 10/100/1000 | Radio type OFDM o DSSS con capacità NLOS
- » Supporto scripting: backup schedulati, allarmistica
- » Configurazione flessibile: bridge/routing, firewall, QoS
- » Plug'n'Play: semplice installazione



Applicazioni

- » Wireless Internet Service Provider - WISP
- » Sicurezza e Videosorveglianza Urbana
- » System Integrator
- » Carrier
- » Reti Wireless Punto-Multipunto Private
- » Emergency back up / Disaster Recovery
- » Militari, Pubblica Amministrazione o Università
- » Alternativa a linee cablate CDN, HDSL o Fibre Ottiche



Descrizione

HIPERLINK CPE AC ATRH0595 nasce come il completamento ottimale del sistema HIPERLINK Base Station AC. E' compatibile anche con il sistema HIPERLINK Base Station classico. HIPERLINK CPE AC ATRH0595 nasce come La CPE professionale a doppia polarizzazione ad alto guadagno, 23 dBi, ed affidabilità dedicata ai Carrier Telefonici, agli Operatori, ai WISP, alle Pubbliche Amministrazioni.

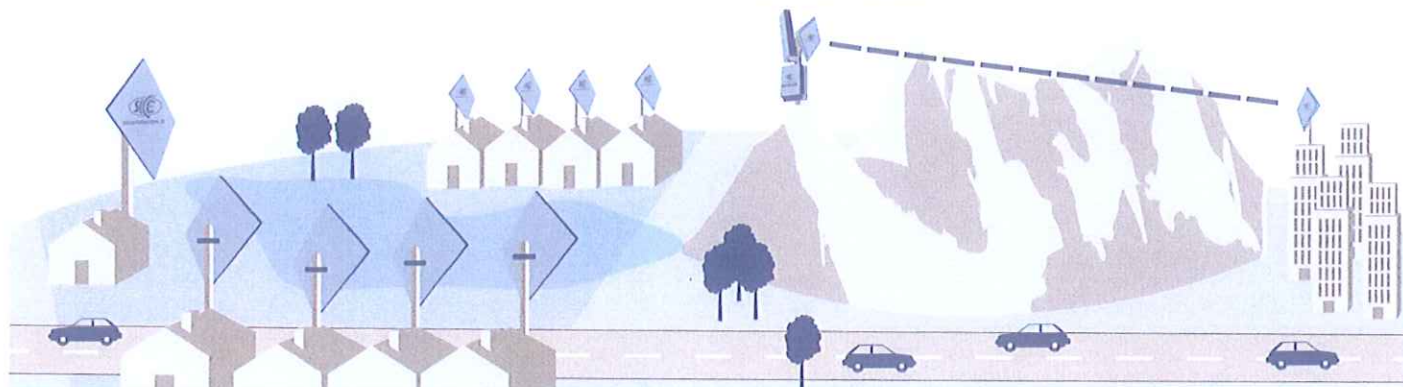
HIPERLINK CPE AC ATRH0595 è interamente progettata ed ingegnerizzata in Italia da SICE. Il "case" è il risultato di una processo di alta qualità di pressofusione in alluminio, mentre l'antenna da 23 dBi di guadagno è il risultato di un progetto che utilizza la tecnologia Fixed per massimizzare i guadagni anche in doppia polarizzazione.

Grazie alla presenza dello scaricatore integrato lato ethernet la CPE ha una resistenza maggiore alle sovratensioni tipiche delle reti domestiche.

HIPERLINK CPE AC ATRH0595 è alimentato di serie con l'alimentatore Power Over Ethernet ed è disponibile anche la versione a 48V per consentire l'alimentazione tramite stazioni di energia (opzione da richiedere in fase di ordine).

Il software di apparato garantisce ampia flessibilità e consente il completo controllo dell'apparato sia dal punto di vista fisico che dal punto di vista funzionale sono previste infatti funzionalità di ultima generazione per VPN, Sicurezza dei dati, Crittografia, Assegnazione IP, Aggiornamento Software da remoto, autenticazione PPPoE, Firewall (NAT, Filtering, QoS) e Agent SNMP. E' possibile inoltre creare reti sia bridged (layer 2), sia routed (layer 3).

HIPERLINK CPE AC ATRH0595 trova largo impiego nella realizzazione di reti per Wireless Service Provider, sicurezza e videosorveglianza urbana, Carrier, Enti Militari, Pubblica Amministrazione, Università e per Disaster Recovery.



Caratteristiche

Frequenza operativa	5,47-5,725GHz
Radio module	802.11 a/g/n/ac, 20/40/80 MHz channel width, modulazione up to 256qam
Potenza TX	30 dBm EIRP
Sensibilità RX all'antenna	-115 dBm @ 6 Mbit/s ± 1dB (tipica)
Uscita RF	Antenna Integrata alto guadagno 23dBi, Zero perdite di connessione RF (+3dB RX Signal)
Transmit power Management	TPC function - ERC/DEC/99/23
Channel management	DFS (Dynamic Frequency Selection), Auto Channel Selection, Radar free, CEPT ERC 70-03
Standard Ethernet	802.3 CSMA/CD - Ethernet 10/100/1000 Full Duplex, Autosensing - Auto MDI/MDIX
Alimentazione	POE 12/24V VDC (alimentazione esterna 110/230 VAC)
Caratteristiche hardware	Consumo: 4.5 W, RAM: 64MB, Storage: 64MB
Grado di protezione	IP68 in Alluminio pressofuso
Range Temperatura	40°C / + 80°C
Supporto a palo	Per pali mm 25/55 (regolazione H e V)
Caratteristiche meccaniche	320 mm x 320 mm x 65 mm
Peso	1,2Kg (antenna integrata)
Bridge	Multiple bridge, RSTP/STP, Bridge firewall

Protezioni Radio	Antenna su GND, Porta RF con protezione fino 16kV ESD
Modalità di gestione e configurazione	Telnet client, Telnet server, MAC Telnet server, SSH, SSH on GUI, Http
Supporto VPN	IPSEC, EoIP, PPP, VLAN, L2TP, PPPoE, IPP, oVPN, SSTP
Assegnazione IP	DHCP client, DHCP server
Standard di Riferimento	En301893, En301489, En60950, RoHS compliant
VLAN	802.1q, Multiple VLAN interface, inter VLAN routing, QinQ, Nesting VLAN
Aggiornamento software, backup e ripristino della configurazione	Tramite FTP e Drag and Drop direttamente da cartelle di sistema di Windows
Modalità Wireless	Multipoint Client, Point to Point
Sicurezza Wireless	Mac-filtering, WEP 64/128bit, WPA/WPA2 aes-ccm/tkip, PSK/EAP, Radius Auth, Management Frame Encryption, Mac-filtering, WEP 64/128bit, WPA/WPA2 aes-ccm/tkip, PSK/EAP, Radius Auth, Management Frame Encryption
Sicurezza	Firewall con F2P limitation, Mac-address filtering e L7 filtering, Radius server authentication (AAA)
Routing	RIP, OSPF, BGP, MPLS, MME, HWMP+
Access protection	Multilayer users management
Agent SNMP	SNMP V1 client, MIB II, Bridge MIB
QoS	WMM, 802.1p, IP ToS RFC791, CBQ Queuing, L7 traffic inspection, Hierarchical HTB, PQ, RED, SFQ, FIFO queue with burst

Codici apparati

ATRH0595	HIPERLINK Subscriber Unit 5 GHz AC (CPE), antenna integrata Dual Polarization 23dBi, staffa di supporto e alimentatore POE
----------	--



SNO-7084R

3Megapixel Weatherproof Network IR Camera

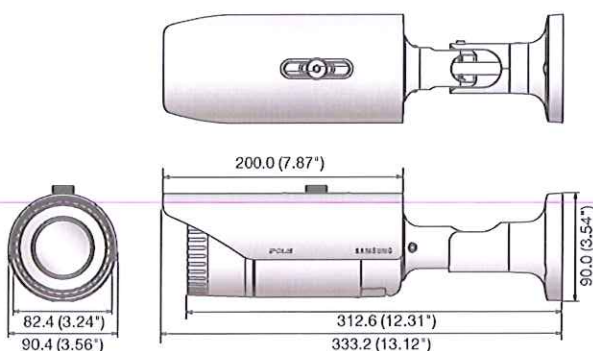


Key Features

- Max. 3M (2048 x 1536) resolution
- 30fps@2,048 x 1,536 / 60fps@1,920 x 1,080
- 3 ~ 8.5mm (2.8x) motorized varifocal lens
- Simple focus (Motorized VF), P-Iris
- Day & Night (ICR), Enhanced DIS, Defog
- 3M real-time WDR (Max. 120dB)
- micro SD/SDHC/SDXC memory slot (4GB included)
- Multi-crop streaming
- IR LED (20ea), PoE, IP66, IK10, Bi-directional audio support

Dimensions

Unit : mm (inch)



SNO-7084R/NP	
VIDEO	
Imaging Device	1/2.8" 3.2M CMOS
Total / Effective Pixels	2,085(H) x 1,565(V) / 2,085(H) x 1,553(V)
Scanning System	Progressive
Min. Illumination	Color : 0.1Lux (F1.2, 50IRE), 0.06Lux (F1.2, 30IRE), 0.001Lux (2sec, F1.2, 30IRE) B/W : 0Lux (F1.2, 50IRE), 0Lux (F1.2, 30IRE), 0Lux (2sec, F1.2, 50IRE)
S/N Ratio	50dB
Video Output	CVBS : 1.0Vp-p / 75Ω composite, 720 x 480(N), 720 x 576(P), for installation, Connector type
LENS	
Focal Length (Zoom Ratio)	3 ~ 8.5mm (2.8x) motorized varifocal
Max. Aperture Ratio	F1.2
Angular Field of View	H : 100.12° (Wide) ~ 35.38° (Tele) / V : 73.76° (Wide) ~ 26.58° (Tele)
Min. Object Distance	0.5m (1.64ft)
Focus Control	Simple focus (Motorized VF) / Manual, Remote control via network (Manual, Simple focus)
Lens Type / Mount Type	DC auto iris, P-Iris / Board-in type
OPERATIONAL	
IR LED	20ea
Viewable Length	30m (98.43ft)
Camera Title	Off / On (Displayed up to 45 characters)
Day & Night	Auto (ICR) / Color / B/W / External / Schedule
Backlight Compensation	Off / BLC / WDR
Wide Dynamic Range	120dB
Contrast Enhancement	SSDR (Samsung Super Dynamic Range) (Off / On)
Digital Noise Reduction	SSNR (20+3D noise filter) (Off / On)
Digital Image Stabilization	Off / On
Defog	Off / Auto / Manual
Motion Detection	Off / On (4 zones with 4-sided polygon)
Privacy Masking	Off / On (32 zones with 4-sided polygon)
Gain Control	Off / Low / Middle / High
White Balance	ATW / AWC / Manual / Indoor / Outdoor
Electronic Shutter Speed	Minimum / Maximum / Anti-Flicker (1 ~ 1/12,000sec)
Flip / Mirror	Off / On
Intelligent Video Analytics	Tampering, Virtual line, Enter / Exit, (Dis)Appear, Audio detection, Face detection with metadata
Alarm I/O	Input 1ea / Output 1ea
Alarm Triggers	Motion detection, Tampering, Audio detection, Face detection, Network disconnection, Video analytics, Alarm input
Alarm Events	File upload via FTP and E-mail, Notification via E-mail, Local storage (SD/SDHC/SDXC) or NAS recording at Event, External output
NETWORK	
Ethernet	RJ-45 (10/100BASE-T)
Video Compression Format	H.264 (MPEG-4 part 10/AVC), MJPEG
Resolution	2048 x 1536, 1920 x 1080, 1600 x 1200, 1280 x 1024, 1280 x 960, 1280 x 720, 1024 x 768, 800 x 600, 800 x 450, 640 x 480, 640 x 360, 320 x 240, 320 x 180
Max. Framerate	H.264 : Max. 30fps@2048 x 1536, 1600 x 1200, Max 60fps@the other resolutions MJPEG : Max. 10fps@2048 x 1536 Max. 15fps@1920 x 1080, 1600 x 1200, 1280 x 1024, 1280 x 960, 1280 x 720, 1024 x 768 Max. 30fps@800 x 600, 800 x 450, 640 x 480, 640 x 360, 320 x 240, 320 x 180
Smart Codec	Manual mode (Area-based : 5ea), Face detection mode
Video Quality Adjustment	H.264 : Compression level, Target bitrate level control, MJPEG : Quality level control
Bitrate Control Method	H.264 : CBR or VBR, MJPEG : VBR
Streaming Capability	Multiple streaming (Up to 10 profiles)
Audio In	Selectable (Mic in / Line in), Supply voltage : 2.5V DC (4mA), Input impedance : approx. 2K Ohm
Audio Out	Line out (3.5mm mono jack), Max output level : 1Vrms
Audio Compression Format	G.711 u-law/G.726 selectable, G.726 (ADPCM) 8KHz, G.711 8KHz
Audio Communication	Bi-directional audio
IP	IPv4, IPv6
Protocol	TCP/IP, UDP/IP, RTP/UDP, RTP/TCP, RTSP/RTSP, NTP, HTTP, HTTPS, SSL, DHCP, PPPoE, FTP, SMTP, ICMP, IGMP, SNMPv1/v2c/v3(MIB-2), ARP, DNS, DDNS, CoS, PIM-SM, UPnP, Bonjour
Security	HTTPS/SSL login authentication, Digest login authentication
Streaming Method	Unicast / Multicast
Max. User Access	15 users at unicast mode
Edge Storage	micro SD/SDHC/SDXC (4GB included) Motion images recorded in the SDXC/SDHC/SD memory card can be downloaded NAS (Network Attached Storage)
Application Programming Interface	ONVIF profile S, HTTP API (SUNAPI) 2.0, SWP 1.2
Webpage Language	English, French, German, Spanish, Italian, Chinese, Korean, Russian, Japanese, Swedish, Danish, Portuguese, Turkish, Polish, Czech, Rumanian, Serbian, Dutch, Croatian, Hungarian, Greek, Norwegian, Finnish
Web Viewer	Supported OS : Windows XP / VISTA / 7 / 8 / 8.1, MAC OS X 10.7 Supported Browser : Microsoft Internet Explorer (Ver. 11 ~ 8) Mozilla Firefox (Ver. 19 ~ 9) * Windows only Google Chrome (Ver. 25 ~ 15) * Windows only Apple Safari (Ver. 6.0.2/Mac OS X 10.8, 10.7 only), 5.1.7) * Mac OS X only
Central Management Software	SmartViewer, SSM
ENVIRONMENTAL	
Operating Temperature / Humidity	24VAC : -50°C ~ +55°C (-58°F ~ +131°F) / Less than 90% RH 12V DC, PoE : -20°C ~ +55°C (-4°F ~ +131°F) / Less than 90% RH *Start up should be done at above -10°C (+14°F)
Storage Temperature / Humidity	-30°C ~ +60°C (-22°F ~ +140°F) / Less than 90% RH
Ingress Protection / Vandal Resistance	IP66 / IK10
ELECTRICAL	
Input Voltage / Current	24VAC, 12V DC, PoE (IEEE802.3af class3)
Power Consumption	Max. 11.5W (12V DC), Max. 12.5W (PoE), Max. 13.0W / 19.0W (24VAC, Heater off / on) * Heater works at AC power input only
MECHANICAL	
Color / Material	Dark gray / Aluminum
Dimensions (WxHxD)	82.4 x 82.4 x 312.6mm (3.24" x 3.24" x 12.31") (Without sunshield)
Weight	1.19Kg (2.62 lb) (With sunshield)

* Data recorded on an SD memory card may be lost or damaged by data access during power-off, mechanical shock, memory card detachment, or other operations. Data loss or damage can also occur when a memory card reaches end of life, which varies according to operational conditions. No guarantee is given against damage (including passive damage).

* The latest product information / specification can be found at www.samsungsecurity.com

MAX. 400Mbps Recording Bit Rate

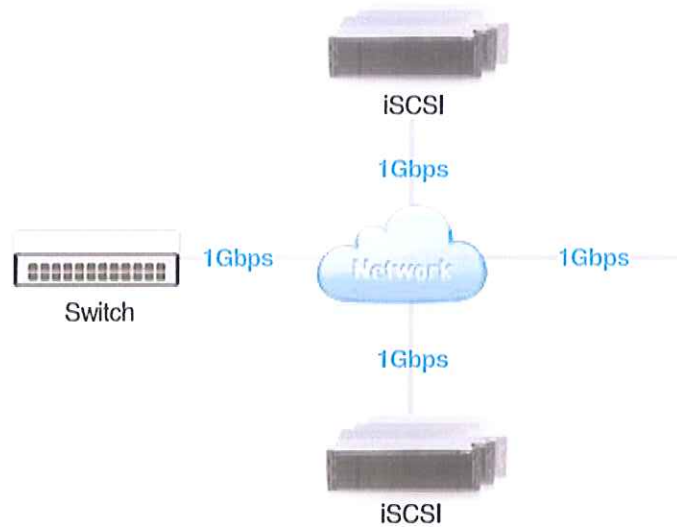
- Max 5MP resolution and up to 64CH support
- 2Megapixel x 64 Channel real-time recording



[Source: Samsung Techwin iPOLICE Network Design Tool]

Location Independent Data Storage

- iSCSI (Internet Small Computer System Interface)
- Maximum 76HDDs (max. 3TB/each)

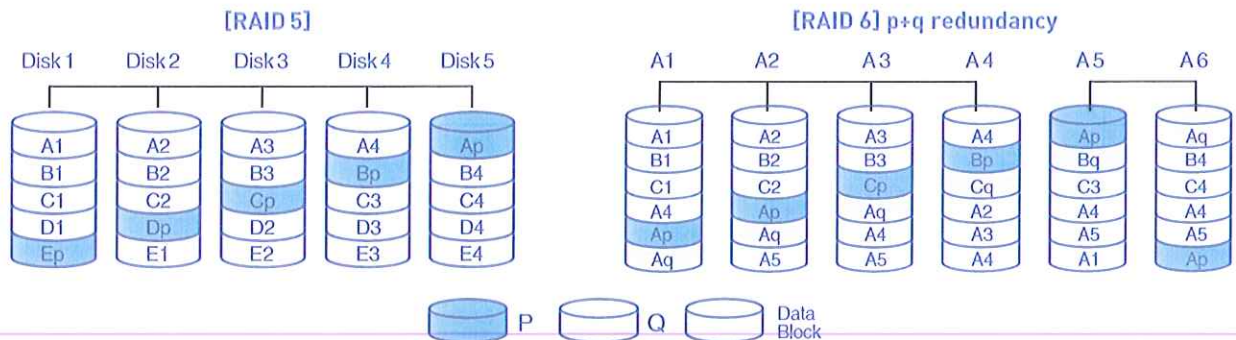


Zero Downtime! Secure All Data

RAID 5/6 Support

- Prevent any data loss as striped blocks and distributed parity

* 1 array = max. 6 internal disks



Hot Swap

- Stable storage and power supply with alarm alerts

Replace HDDs while still recording



Replaceable Front HDD Bays: up to 12ea (3TB/each)

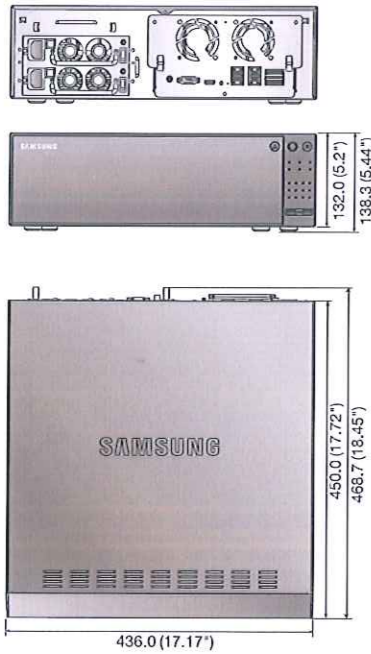
Dual SMPS



Redundant power supply



Dimensions



Specifications

		SRN-4000
DISPLAY		
N/W Camera	Inputs	Up to 64CH
	Resolution	CIF - 5M
	Protocols	Samsung, ONVIF
	Local Display	HDMI/VGA
Live	Multi Screen Display	[Local monitor] 1 / 4 / 9 / 16 / Sequence, [Web] 1 / 4 / 9 / 16 / 32 / 64 / Sequence
PERFORMANCE		
Operating System	Embedded	Linux
	Compression	H.264, MPEG-4, MJPEG
	Recording Bit Rate	Max. 400Mbps (2M 64camera real-time recording)
	Resolution	CIF - 5M
Recording	Mode	Manual, Schedule (Continuous / Event), Event (Pre / Post)
	Event Trigger	Alarm input, Video loss, Camera event (Sensor, MD, Video Analytics), VA (Up to 4ch selectable, Advanced MD, Object classification (People, Car))
	Event Action	E-mail, PTZ preset, Alarm out, Buzzer, Monitor out
	Playback Bandwidth	25Mbps (16CH simultaneously)
Search & Playback	Search Mode	Date & Time (Calendar) / Event log list
	Simultaneous Playback	16CH (Local monitor), 4CH (Web)
	Resolution	CIF - 5M
	Playback Function	Fast forward / backward, Move one step up / down
	Internal HDD	12 (Hot swap), Max. 36TB
Storage	External (e-SATA Interface)	NAS (SCSI) : vesa RAID 1840i, Max. 192TB (JBOD)
	RAID	RAID-5/6
	File Back up (Via Web)	BLU/Exe (GUI), JPG, AVI (Network)
Back up	Function	Single channel play, Date-time/title display
Sensor	Input / Output	8 / 4 (NO/NC selectable)
	Input	64CH (Network)
Alarm	Compression	G.711, G.726
	Audio Communication	2-way
NETWORK		
Ethernet		RJ-45, Gigabit Ethernet x 4
Protocol Support		TCP/IP, UDP/IP, RTP (UDP), RTP (TCP), RTSP, NTP, HTTP, DHCP, PPPoE, SMTP, ICMP, IGMP, ARP, DNS, DDNS, UPnP, ONVIF, HTTPS, SNMP
DDNS		Samsung iPOLiS DDNS
Transmission Speed		Up to 200Mbps
Max. Remote Users		Search 3 / Live unicast 10 / Live multicast 20
IP		IPv4/v6
Security		IP address filtering, User access log, 802.1x authentication, Encryption
		English, French, German, Italian, Spanish, Russian, Turkish, Polish, Dutch, Swedish, Czech, Portuguese, Danish, Rumanian, Serbian, Croatian, Hungarian, Greek, Norwegian, Finnish, Korean, Chinese, Japanese, Thai
Language		Supported OS : Window XP (service pack 2 or above), Vista, 7, 8, Mac OS X (10.7 or above)
OS		MS IE 8.x, 9.x, Google Chrome, Mac Safari, Firefox 2.x, 3.x
Web Browser		Webviewer, SmartViewer
Viewer Software	Type	Support SDK / CGI
	CMS Support	Android, iOS
	Platform	RTP, RTSP, HTTP, CGI
Smart Phone	Protocol Support	Live 10, Playback 1
	Max. Remote Users	
FUNCTIONS		
Register		Auto, Manual
Camera Setup	Setup Items	1) IP Address, Add Profile Edit, Bitrate, Compression, GOP, Quality 2) Video Setup (MD, ABF, Brightness/Contrast, Flip/Mirror, IRIS, WDR, D&N, SSNR, Shutter)
PTZ	Control	Via GUI, Webviewer
	Preset	256 presets
Smart phone	Support Model	I-Phone, Android
	Control	Live 4CH / Playback 1CH
System Control		Mouse
INDICATOR / INTERFACE		
Front	Indicator	LED status indicator : HDD action 12, RAID status 1, Alarm 1, Power 1, Record 1, Back up 1, Network 1
	Switch	PWR switch 1ea, Key-lock 1ea
	VGA	1ea
	HDMI	1ea
	Audio	Out (1ea, RCA, Line)
Connections	Ethernet	4 RJ-45 10/100/1000 Base-T
	Alarm	In (8ea, Terminal block) / Out (4ea, Terminal block)
	USB	2ea (Front)
	Reset	Switch (1ea)
	Power Cord	2ea AC inlet
SYSTEM		
Log	Log List	Max. 20000 (System log, Event log each)
GENERAL		
Electrical	Input Voltage / Current	100 ~ 240V AC ±10%, 50/60Hz, 4 ~ 1.5A (Dual SMPS)
	Power Consumption	Max. 56W (154 BTU with 1 HDD), Max. 170W (580 BTU with 12 HDDs)
	Operating Temperature	+0°C ~ +40°C (+32°F ~ +104°F)
Environmental	Operating Humidity	20% ~ 85% RH
	Dimensions (WxHxD)	436.0 x 132.0 x 450.0mm (17.17" x 5.2" x 17.72") (3U)
Mechanical	Weight (1x Hard Disks)	Approx. 6.7Kg (14.77 lb)
Approvals	Safety	UL, KC
	EMC	CE, FCC, CCC, Gost-R

Design and specifications are subject to change without notice.

Exceptional Performance and Stability

SRN-4000 64CH Network Video Recorder



DISTRIBUTED BY



SAMSUNG TECHWIN CO., LTD.

6, Pangyo-ro 319beon-gil, Bundang-gu, Seongnam-si, Gyeonggi-do, SEOUL 463-400 Rep. of KOREA
Tel : +82-70-7147-8741 ~ 8749, 8752 ~ 8760 Fax : +82-31-8918-3745 www.samsungsecurity.com www.samsungcctv.com
COPYRIGHT BY SAMSUNG TECHWIN. ALL RIGHT RESERVED

SAMSUNG TECHWIN AMERICA Inc.
100 Challenger Rd. Suite 700 Ridgefield Park, NJ 07060
Tel: +1-877-213-1222 Direct: +1-201-365-8820
Fax: +1-201-373-9124

SAMSUNG TECHWIN EUROPE LTD.
2nd Floor, No. 5 The Heights, Brooklands Way, Surrey KT11 3DF, UK
Tel: +44-1932-82-6700 Fax: +44-1932-82-6701

SHANGHAI SAMSUNG TECHWIN CO., LTD.
32F, Bk B, International Business Center, No. 591 Guiping Rd., Shanghai, China, 200233
Tel: +86-21-5427-1155 Fax: +86-21-5423-5122



SAMSUNG TECHWIN

PRELIMINARY EDITION 12-2013

www.samsungipolis.co

MAX. 400Mbps Recording Bit Rate

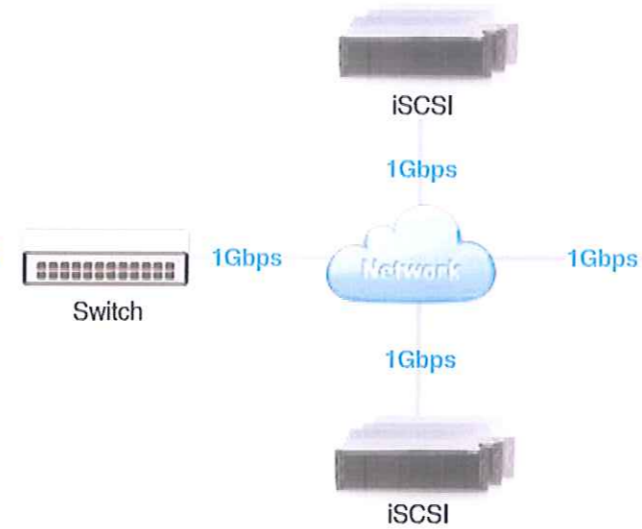
- Max 5MP resolution and up to 64CH support
- 2Megapixel x 64 Channel real-time recording



[Source: Samsung Techwin iPOLiCE Network Design Tool]

Location Independent Data Storage

- iSCSI (Internet Small Computer System Interface)
- Maximum 76HDDs (max. 3TB/each)



Intelligent Data Search

- Combine Video Analytics and Meta-data

SRN-4000

» **Classifications** : by entering keywords, Vehicle-People and search for the corresponding data

Search:Vehicle

Search:people

» **Heat Map** : Statistically analyze concentrated spots in a matrix as colors.

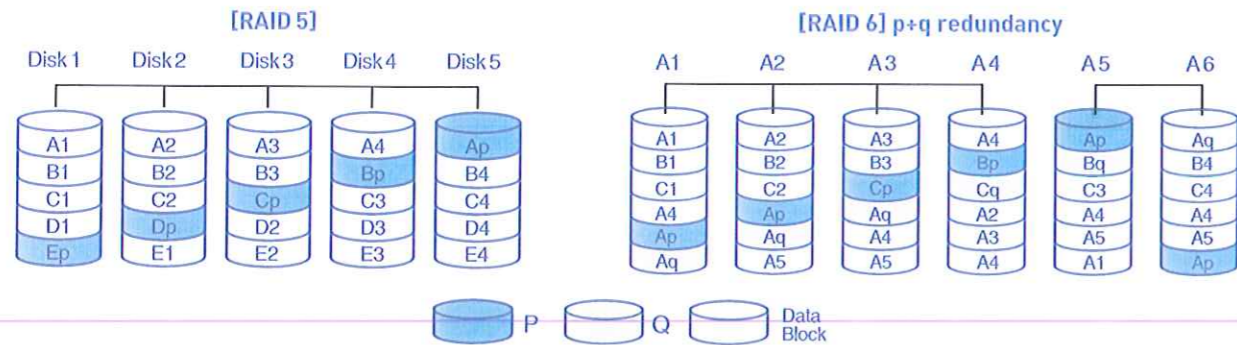
Search:Vehicle

Search:people

Zero Downtime! Secure All Data

RAID 5/6 Support

- Prevent any data loss as striped blocks and distributed parity
- * 1 array = max. 6 internal disks



Hot Swap

- Stable storage and power supply with alarm alerts

Replace HDDs while still recording



Replaceable Front HDD Bays: up to 12ea (3TB/each)

Dual SMPS

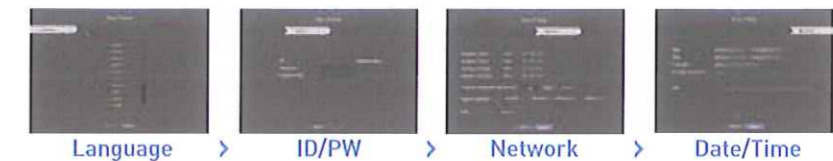


Redundant power supply

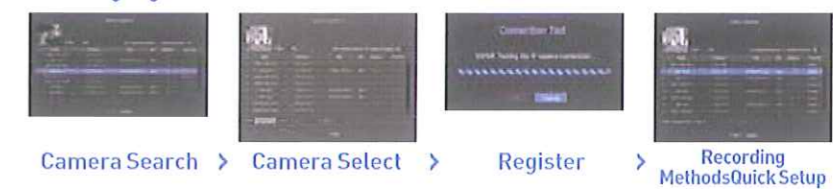
PC-LESS! Easy Installation and Operation

ONLY 4 steps to Install or Register cameras

- Easy Setup Wizard :



- Quick Setup Wizard :



Directly connect a monitor and mouse

- Control camera registrations/settings and search for video data without the need for a PC

Customized User Layouts: register up to 100 people categorized by security groups

